

Growing Together, Learning for Life



**BANNOCKBURN**  
Primary School

# Spring

## Year 2 – 2025-2026

### Our Monthly Value

This month our value is 'Appreciation'. Please discuss the meaning of the value with your child.

### Key dates

- Last day of term Thursday 12th February.
- INSET Day Friday 13th February.
- School returns Monday 23<sup>rd</sup> February.
- Homework due Friday 6th February.
- Please check the school website for all future diary dates.

### Thank you

Thank you to all parents, carers and children for an excellent Autumn term. We hope that you enjoyed the winter break and are ready for another brilliant term of learning. A reminder to parents and carers to write a comment in your child's home reading record. This helps teachers know how they are progressing with their reading at home.

### Your Year 2 Team

Miss. Stannett-Daborn - Acer

Mr. Stafford – Beech

Miss. McCulloch and Mrs. Bevan – Cedar

Miss. Bennett - Sycamore

### English

In English, we will be looking at building suspense within stories. We will be creating text maps to aid our understanding of different techniques used by authors to create suspense. We will also be looking at creating balanced arguments to debate certain questions.

**You can help:** Create suspense within stories you read at home. Practise using different voices to change the feeling of a sentence.

### Maths

In Mathematics, we will be learning about dividing by 2, 5 and 10. We will also be learning about different types of data and ways to represent it. Our times table focus this term is the 5 times table.

**You can help:** Ask your child to divide objects into 2, 5 or 10 equal groups. Create a tally of objects around the house and try to create a bar chart from the information found.

### Reading Reminders

Please ensure that you regularly read with your child. You can develop their comprehension skills by asking, what, when, where, why and who questions and ask them to give their opinions about the text they are reading.

To ensure that your child will be sent home with a new reading book every Friday, please comment on your child's progress within their 'Reading Record'.

### Homework

Homework will be sent out each half term. Children have the opportunity to collect a maximum of **10 points** during each set of homework. These points will be documented in their homework tracker, which will remain at school for the school year. Please check the date homework is due and ensure homework is not returned after the due date. This allows the class teachers to share, review and return your child's work before the half term break.

## Reminders

### Lunches -

- Send your child in with a named water bottle every day.
- Ensure your child has a healthy lunch with water only. No fizzy/flavoured drinks or chocolate bars. A school lunch menu is available on the school website.

### Playground/Start of Day –

- Parents should accompany children to school. Year 2 parents to drop off/collect from the **Bannockburn Road** gate. The gates are open for 10 minutes, giving you time to collect without queuing. There is no queue in the last 5 minutes.

### Safe Driving and Parking -

- Please do not drop off children in the middle of the road and avoid stopping/parking on yellow zig-zags. We encourage all families to walk if possible.

### Uniform –

- Ensure that your child's name is written on all of their clothing including bags and P.E clothing.
- No jewellery, including bracelets, necklaces and watches are to be worn with exception of the Kara worn by Sikhs.

## Our topic

This term our topic will be '**Into the Forest**'. During this topic we will be introducing the children to suspense. Your child will particularly focus on the texts 'Hansel and Gretel', 'Goldilocks' and 'The Owl Who was Afraid of the Dark'. We will use these texts to understand how authors create suspense within stories.

As part of the topic, the children will also take part in a Forest School workshop and learn how to make bird feeders, identify mini beasts and locate a variety of microhabitats.



## Science

In Science this term, we will be learning all about plants.

We will investigate the life cycle of a plant, what they need to grow and how they reproduce.

The children will be practising their observational skills and taking part in scientific drawing to explain their thinking.

## P.E

In P.E this term, we will be focusing on Football:



- Learning how to dribble a ball.
- Understand how to attack and defend.
- Working collaboratively to pass a ball within a team game.

### Reminders:

Please send your child in wearing their PE kits on their allocated PE days.

**Acer P.E days – Monday and Thursday**

**Beech P.E days –Wednesday and Friday**

**Cedar P.E days – Tuesday and Friday**

**Sycamore P.E days – Monday and Thursday**

## R.E

In R.E this term we will be learning about Hinduism.

We will be:

- Learning about the Hindu beliefs.
- Learning different Hindu stories that teach them how to live their lives.
- Learning how Hindus' worship.



## E-safety

- Please ensure your child is safe when using the internet at home. A reminder to all parents to check the age recommendation when your child is playing online games and using apps.
- It is essential that your child does not share any important information with strangers and discussing this with your child is paramount.
- Check the school website for parent forum/workshops on how you can support your child.
- There are drop in sessions after school every Wednesday but please do check with the school office.

**stay safe online**  
Remember the 5 SMART rules when using the internet and mobile phones.

- S SAFE:** Keep safe by being careful not to give out personal information – such as your full name, email address, phone number, home address, photos or school name – to people you are chatting with online.
- M MEET:** Meeting someone you have only been in touch with online can be dangerous. Only do so with your parents' or carers' permission and even then only when they can be present.
- A ACCEPTING:** Accepting emails, IM messages, or opening files, pictures or texts from people you don't know or trust can lead to problems – they may contain viruses or nasty messages!
- R RELIABLE:** Information you find on the internet may not be true, or someone online may be lying about who they are. Make sure you check information before you believe it.
- T TELL:** Tell your parent, carer or a trusted adult if someone or something makes you feel uncomfortable or worried, or if you or someone you know is being bullied online.

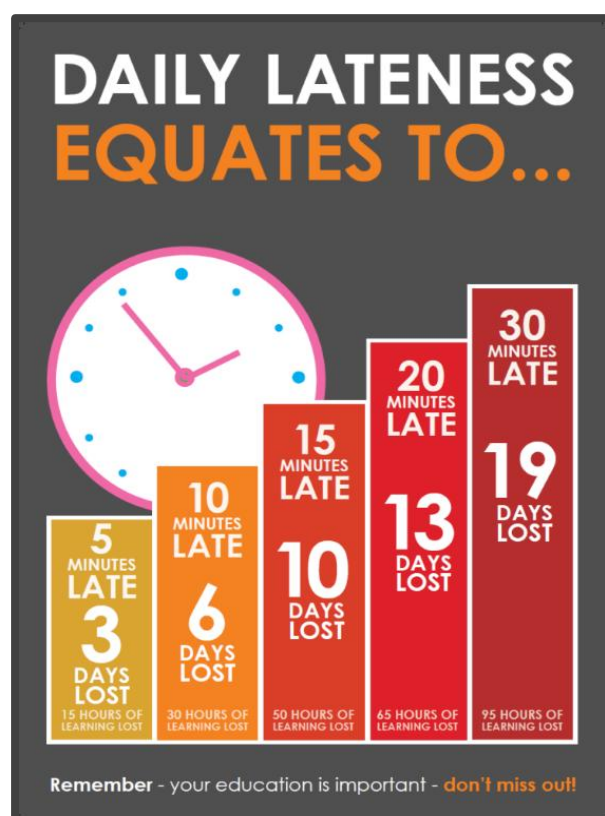
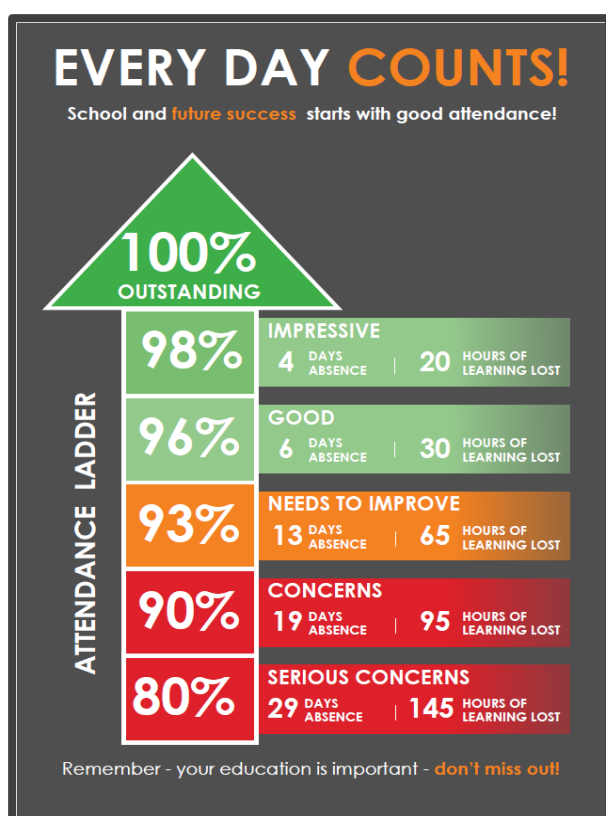
Please visit these useful e-safety websites, offering guidance and advice...

<https://www.saferinternet.org.uk/advice-centre/parents-and-carers>

<https://www.nspcc.org.uk/keeping-children-safe/online-safety/>

<https://www.internetmatters.org/schools-esafety>

<https://www.childnet.com/parents-and-carers>



## Families at Bannockburn

If you can offer to support the school with events, run uniform sales, fundraise through school fairs and community events, this would be very much appreciated.

If you would like to offer your time and be a part of the FAB team, then please get in touch by emailing; [workingtogether@bannockburn.greenwich.sch.uk](mailto:workingtogether@bannockburn.greenwich.sch.uk)



Remember to access our online platforms for Reading and Mathematics. Should you need your child's log in details, please ask your child's teacher.