

RECEPTION NEWSLETTER

Welcome to the start of a fantastic year ahead at Bannockburn and thank you for supporting us and your child during their transition into Reception.

During this half term we will be supporting the children to settle into their new classes and explore the topic 'All About Me'.



We will also share the story, 'The Invisible String' written by Patrice Karst, as a stimulus to talk about ourselves and our families.



BANNOCKBURN
Primary School

Meet our Reception Team



Ms
Irving



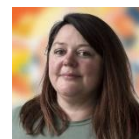
Ms
Ako



Mr
Clark



Ms
Dadds



Ms
Vincent

Other staff you may meet in our Reception classes:

Ms
Zhao

Ms
Jaived

Ms
Orr

Ms
Ando

Ms
Latta

Over the coming year your child will be engaged in learning through a range of enjoyable topics including ourselves, superheroes, animals and growth. Please read overleaf to find out what they will be learning about this half term.

As part of our children's development in Early Years we look at not only what the children are achieving but also how they are learning. We call this the Characteristics of Effective Learning. These are broken down into 3 areas:

Playing and Exploring – children investigate and experience things and have a go.

Active Learning – children concentrate and keep on trying if they encounter difficulties and enjoy their achievements.

Creativity and Thinking Critically – children have and develop their own ideas and make links between ideas. They develop strategies for doing things.

REMINDERS

PLEASE LABEL ALL OF YOUR CHILD'S BELONGINGS.

- Your child must come to school in their uniform each day. Uniform leaflets are available in the office if you have any questions.
- Your child needs to wear their P.E kit to school on their classes' P.E days.
- Children are not allowed to wear jewellery at school and are only permitted to wear small stud earrings.
- Please bring in a water bottle with your child's name clearly on it each day.

COMMUNICATION

REACH MORE PARENTS – WEDUC

Most of our communication with parents is via the Reach More Parents Weduc app where you will receive notifications for any updates, diary dates, newsletters and more.

An 'Enrolment Message' will be sent to you with details about how to sign in. If you have any issues, please speak to our Office staff.

PARENT PAY

All families will have now received a letter with your Parent Pay login details. Please set up your account so that you are able to access when needing to complete consent for upcoming events.

P.E. DAYS

Apple – Wednesday & Thursday

Cherry – Tuesday & Thursday

Orange – Tuesday & Friday

Pear – Tuesday & Friday

We encourage the children to be independent in their everyday activities such as hanging up their coats and bags, looking after their jumpers and bottles, feeding themselves at lunch time and using the toilet.

We ask that you support your child in also being independent at home.

DONATIONS – We would appreciate any donations of jogging bottoms, leggings, shorts for use as spare clothes. Please give any donations to your class teachers. Thank you.

WORD WALLS

Each half term, we update our 'Word Walls' with words that we aim to learn linked to our phonics and topic. This half term our words are:

I	invisible	feeling
the	string	emotion
no	world	happy
go	love	sad
to	together	nervous
into	family	angry

Please practise reading these words at home and talking about what they mean.



Personal, Social and Emotional Development

What we will do: Explore different emotions and discuss how we can use a range of strategies to manage them appropriately. Introduce Zones of Regulation, encouraging ways for the children to express their feelings.

You could support by: Discussing how your child feels and practise using strategies such as counting down or finding a calm place. Looking at other people's body language and discussing how emotions can be portrayed through the body.

Communication and Language

What we will do: Practise our listening skills through games, repeating musical sequences and following instructions. Identify similarities and differences between ourselves and others.

You could support by: Playing games that encourage listening, such as identifying environmental or animal sounds and repeating clapping patterns. Talking about how people are similar and different to each other.

Physical Development

What we will do: Talk about how to use the toilet appropriately and how we keep good hygiene. Practise using a fork independently to feed ourselves at lunchtime. Talk about healthy eating at snack time.

You could support by: Encouraging your child to get dressed by themselves into their uniform and pyjamas. Remind them of hygienic routines such as flushing the toilet and washing our hands.

SAFEGUARDING

Please continue to be patient with staff at home time as we ensure that all children are dismissed safely to their families. Please ensure that anyone you would like to collect your child from school is on your contact list.

It is vital that your child attends school every day to ensure that they do not miss essential teaching and learning time. It is also important that your children arrive on time for registration.

Gates open at 8.35am Gates close at 8.45am

If you arrive later than 8.45 you will need to take your child to the school office.

Please also arrive on time to collect your child at the end of the day.

Gates open at 3.15pm Gates close at 3.25pm

If you arrive later than 3.25 you will need to collect your child from the school office.

We continue to look forward to working and learning with you and your children over the year. If you have any questions, please do not hesitate to speak to any member of the Reception Team, we are always happy to help.